



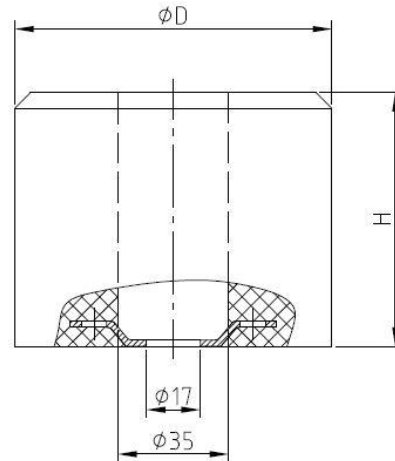
PUFFER P+S D1 100X80

PUFFER P+S D1 100X80

PUFFER P+S D1 100X80

CODIGO

524670



DATOS TECNICOS

TECHNICAL DATA

DONNÉES TECHNIQUES

- **FABRICANTE/MANUFACTURER/FABRICANT:** P+S
- **MATERIAL/MATERIAL/MATÉRIEL:** Diepocell BM®
- **NORMATIVAS/STANDARD/NORMATIVE:** EN81-20/50

CODE	Puffer	Ø (mm)	H (mm)	Qmin / Qmax (Kg) (V=1m/s)	Qmin / Qmax (Kg) (V=0,63m/s)
524669	D0	80	80	180 / 600	150 / 1200
524670	D1	100	80	220 / 700	200 / 1500
524671	D2	100	80	330 / 1250	250 / 3200
524672	D3	125	80	600 / 1850	500 / 5200