



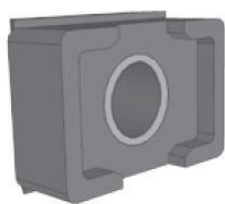
**TOPE GOMA 20X30 MM**

**RUBBER STOP ASSEMBLING 20X30 MM**

**TAMPON EN CAOUTCHOUC 20X30 MM**

**CODIGO**

**527960**



**DATOS TECNICOS**

**TECHNICAL DATA**

**DONNÉES TECHNIQUES**

- **FABRICANTE/MANUFACTURER/FABRICANT:** Fermator
- **TIPO PUERTA/DOOR TYPE/PORTE TYPE:** 40/10 PM, 40/10, 50/11 PM, 50/11
- **FAMILIA PRODUCTO/FAMILY PRODUCT/FAMILLE PRODUIT:** CTG
- **CÓDIGO/CODE/COE:** CTG-TP20.00000