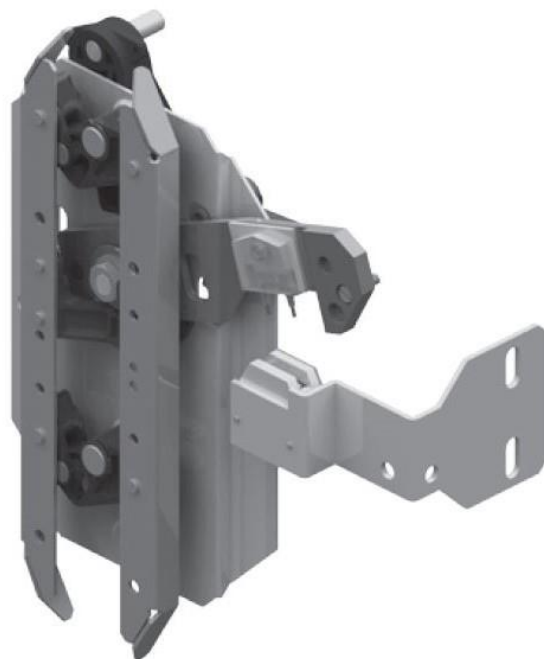




**CONJ. PATIN T2 IZQ. SIMETR. CON ENCLAV. Y CONTACTO**  
**CONTACT AND LOCK CLUTCH ASS. T2 LEFT OP. SYMMETRIC**  
**SABRE T2 GAUCHE SYMETRIQUE DEVERROUILLAGE ET CONTACT**

**CODIGO**

**529158**


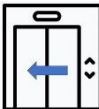


**DATOS TECNICOS**

**TECHNICAL DATA**

**DONNÉES TECHNIQUES**

- **FABRICANTE/MANUFACTURER/FABRICANT:** FERMATOR
- **TIPO PUERTA/DOOR TYPE/PORTE TYPE:** 40/10 PM
- **FAMILIA PRODUCTO/FAMILY PRODUCT/FAMILLE PRODUIT:** CDL

CODE	DOOR OPENING	FERMATOR CODE
529157	Right 	CDL-P000.CD000
529158	Left 	CDL-P000.CI000