

Moving forward & Moving on

FELES 



New and Existing Buildings
Residential and Commercial
Design
Modernity



GRLm

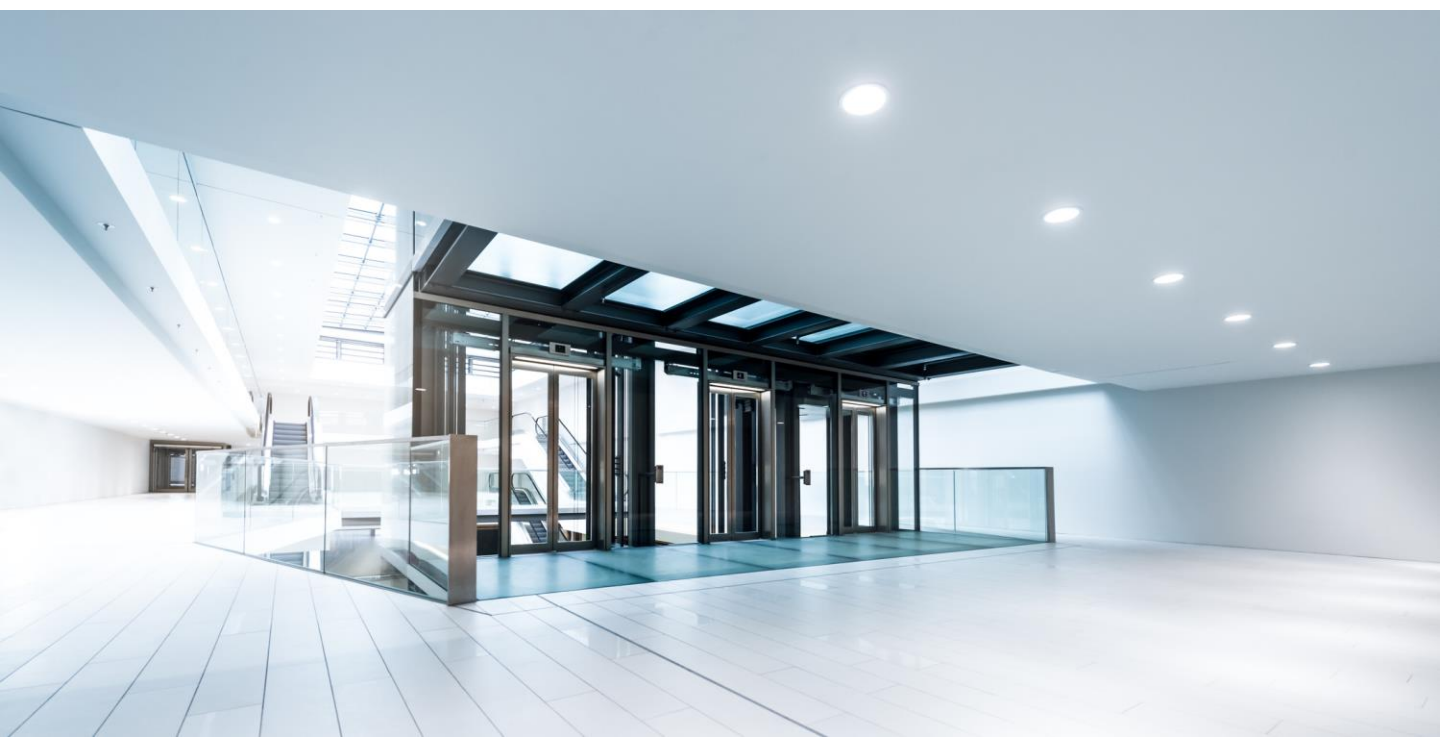
GRLm

- Applications
- Advantages
- Normative
- Application range
- Standard configurations
- Special configurations
- Power and consumptions
- Energy efficiency
- Cabines and finishes
- Gallery

Design + Modernity



Our range of elevators for the residential sector is integrated into the dynamics of life and needs of current buildings, both in efficiency and sustainability as well as in aesthetics and cabine dimensions. With silent and safe movement, functionality is assured.



Applications

- New building / Existing
- Residential
- Commercial
- Offices
- Hospital use

Advantages

- Flexibility. Rucksac car frame.
- Confort
- Fiability
- Modernity
- Simple, double, triple entrances
- 3-phase / Single phase

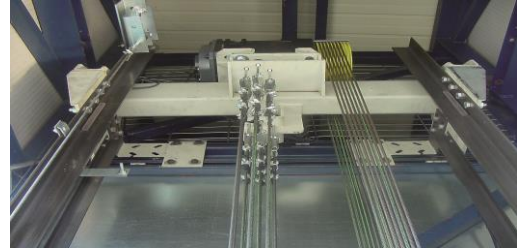
Normative

- 2014/33/UE
- EN81-20 / EN-81-21
- EN81-70
- EN81-71
- EN81-72



Application range

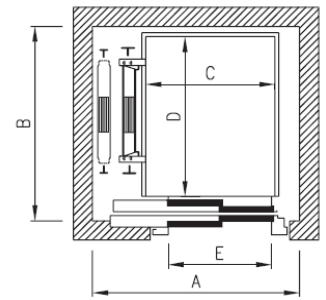
Load (Kg)	miniGRLm: 320/375/480/525/630
Load (Kg)	GRL2m: 800/825/1000/1275
Speed (m/s)	0,6 / 1/ 1,6
Machine room	With motor room/ Machine room less
Entrances	0° / 90° /180° / 270° / Triple
Travel Max (m)	50
Suspension	1:1 / 2:1
Voltage (V)	230II / 230III / 400III
Car frame	Rucksac
Pit (mm)	1200-1350mm (see variants table)
Hedroom (mm)	3400-3850mm (see variants table) GRL2m: Low headroom: 2700mm EN81-21
Panoramics	YES



Standard configurations

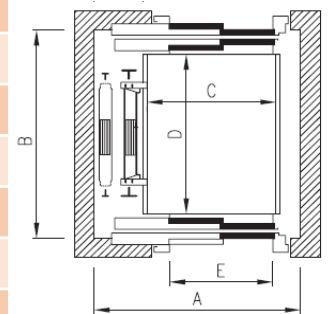
➤ Single entry

Load	Shaft	Cabine	Clear Op	Speed	HR	Pit	Handrail
Kg	AxB mm	CxD mm	E mm	m/s	mm	mm	mm
320	1400x1400	850x1000	700	1/1,6	3550	1200	700
480	1550x1550	1000x1300	800	1/1,6	3400	1200	700
630	1650x1650	1100x1400	900	1/1,6	3400	1200	700
800	1750x1900	1100x1600	900	1/1,6	3850	1200	1100
1000	1750x2400	1100x2100	900	1/1,6	3850	1200	1100
1275	2250x2400	1200x2300	1000	1/1,6	3850	1200	1100



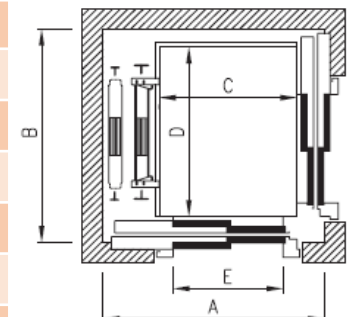
➤ Double entry 180°

Load	Shaft	Cabine	Clear Op	Speed	HR	Pit	Handrail
Kg	AxB mm	CxD mm	E mm	m/s	mm	mm	mm
320	1400x1600	850x1000	700	1/1,6	3400	1350	700
480	1550x1750	1000x1300	800	1/1,6	3400	1200	700
630	1650x1850	1100x1400	900	1/1,6	3400	1200	700
800	1750x2000	1100x1600	900	1/1,6	3450	1200	700
1000	1750x2500	1100x2100	900	1/1,6	3500	1200	700
1275	2250x2500	1300x2100	1000	1/1,6	3850	1250	1100



➤ Double entry 90°/270°

Load	Shaft	Cabine	Clear Op	Speed	HR	Pit	Handrail
Kg	AxB mm	CxD mm	E mm	m/s	mm	mm	mm
320	1500x1600	850x1000	700	1/1,6	3400	1350	700
480	1650x1750	1000x1300	800	1/1,6	3400	1200	700
630	1750x1850	1100x1400	900	1/1,6	3400	1200	700
800	1850x2000	1100x1600	900	1/1,6	3450	1200	700
1000	1850x2500	1100x2100	900	1/1,6	3500	1200	700
1275	2350x2500	1300x2100	1000	1/1,6	3850	1250	1100

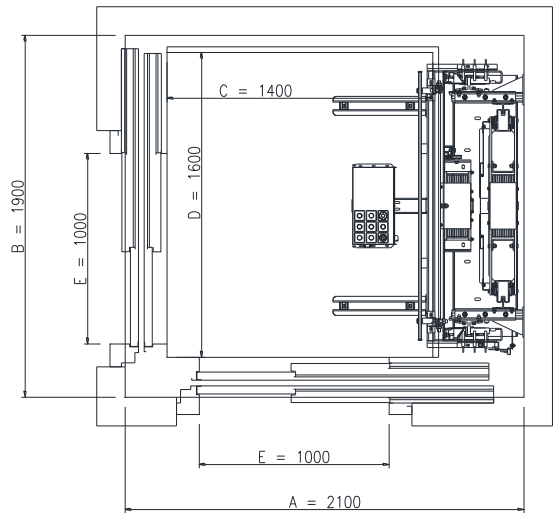
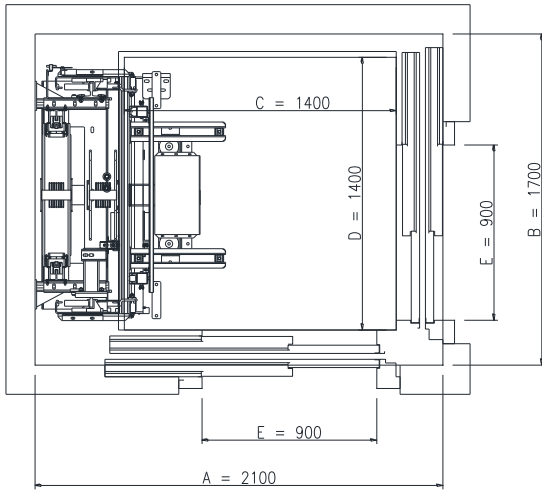




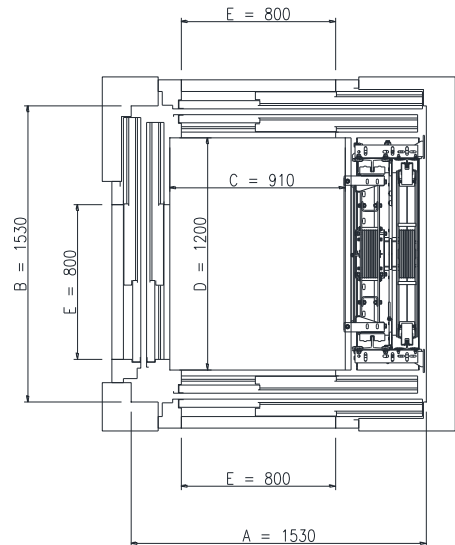
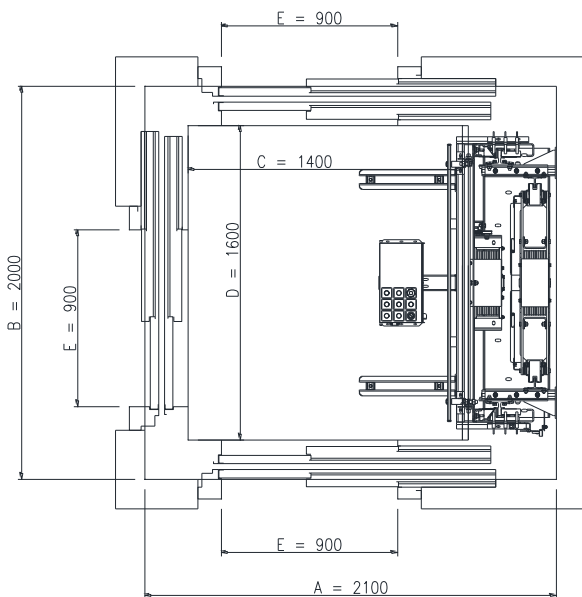
Accesibles EN 81-70



Double entrance configurations 90°/270°

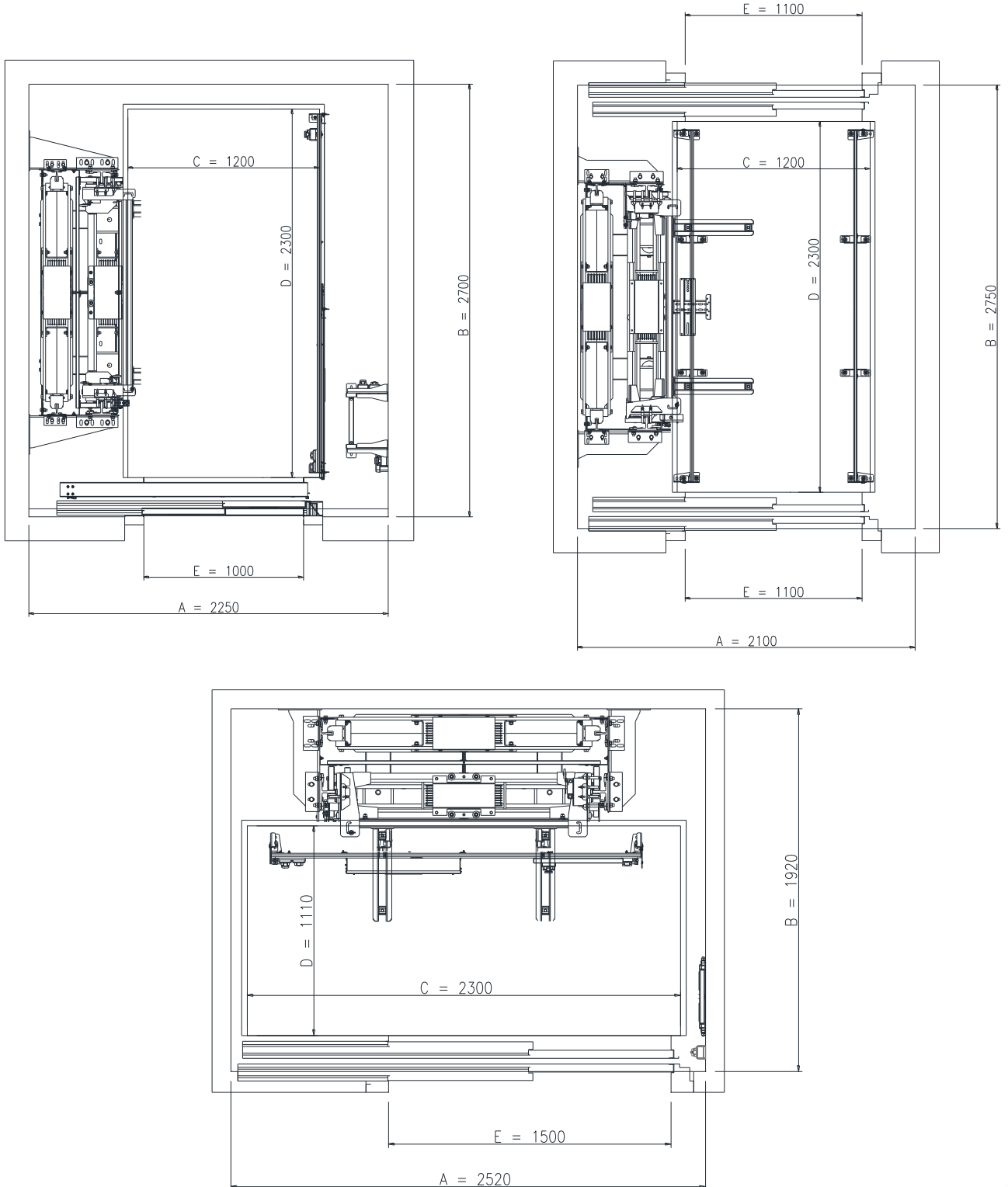


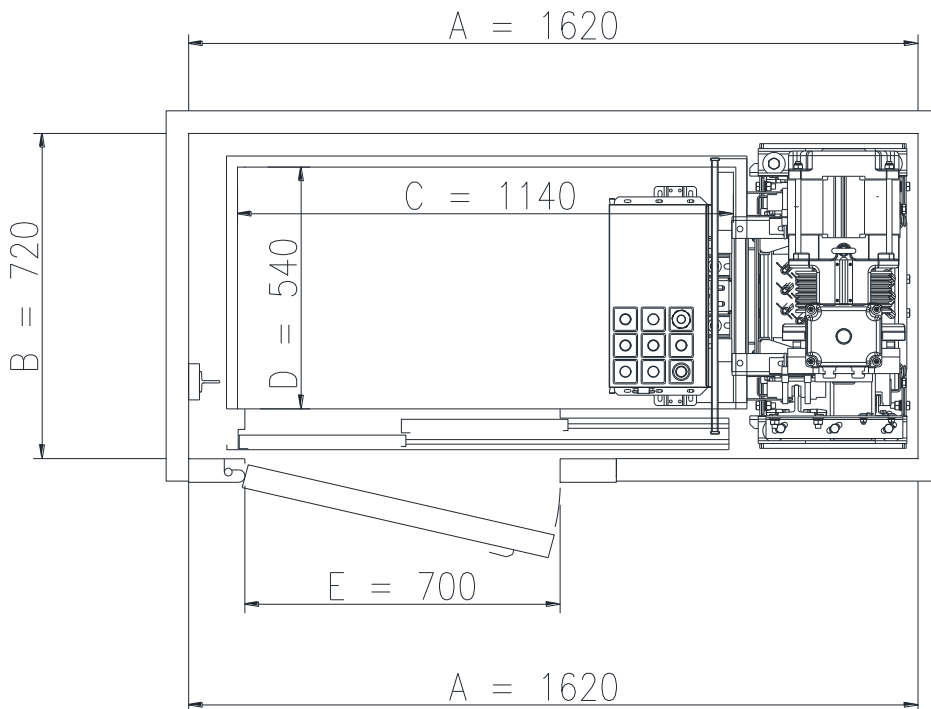
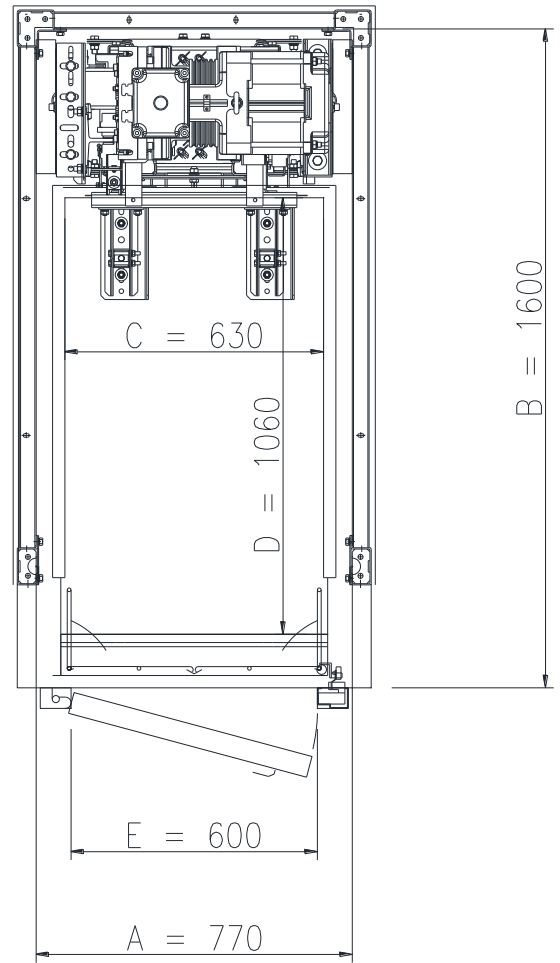
Triple entrance configurations

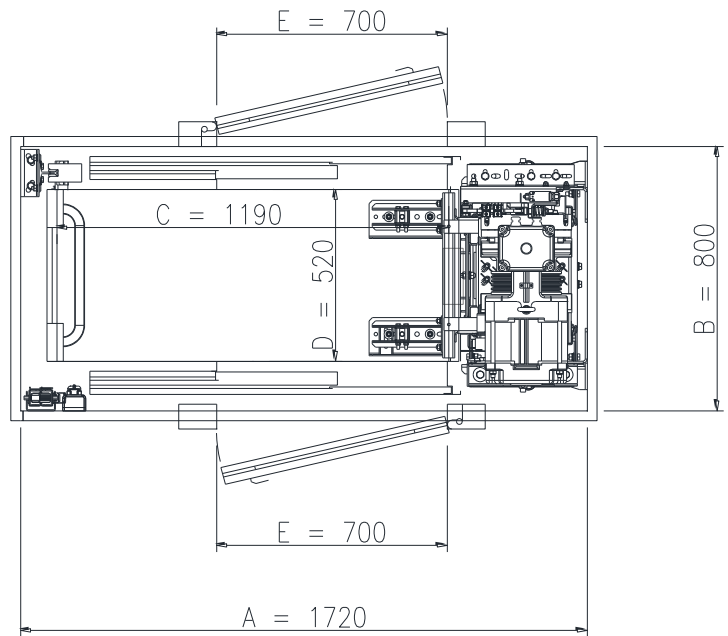
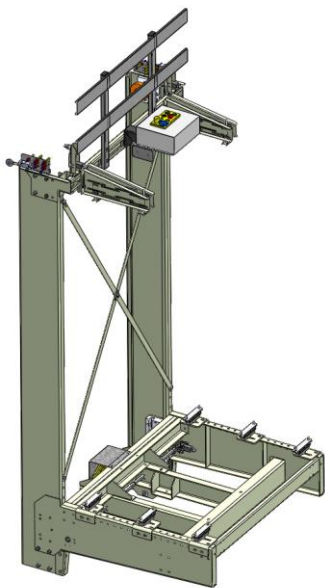
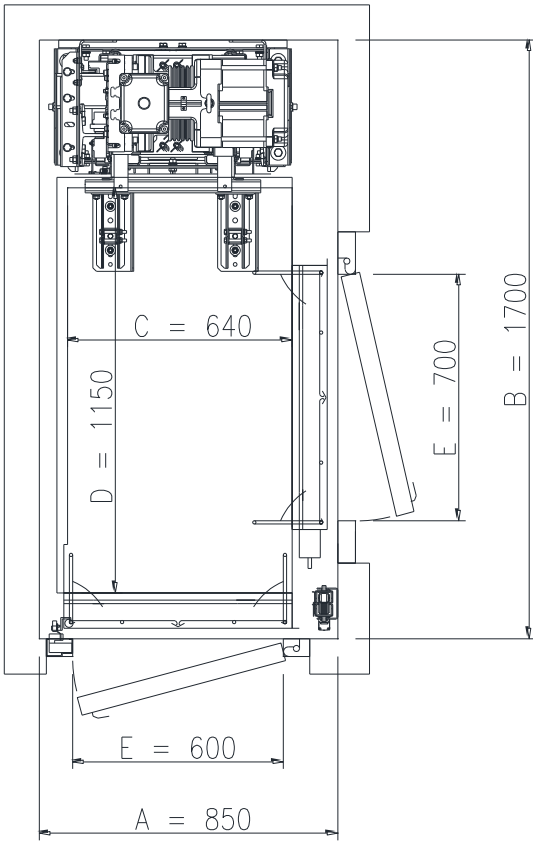




Bedlifts









Power and Consumptions

3 Phase	320 Kg		480Kg		630Kg	
Voltage	380III	230III	380III	230III	380III	230III
P (Kw)	3,3/4		3,3/5,3		4,4/7	
In (A)	8/13	12/19	8/14	12/21	10/16	15/24
V (m/s)	1/1,6		1/1,6		1/1,6	

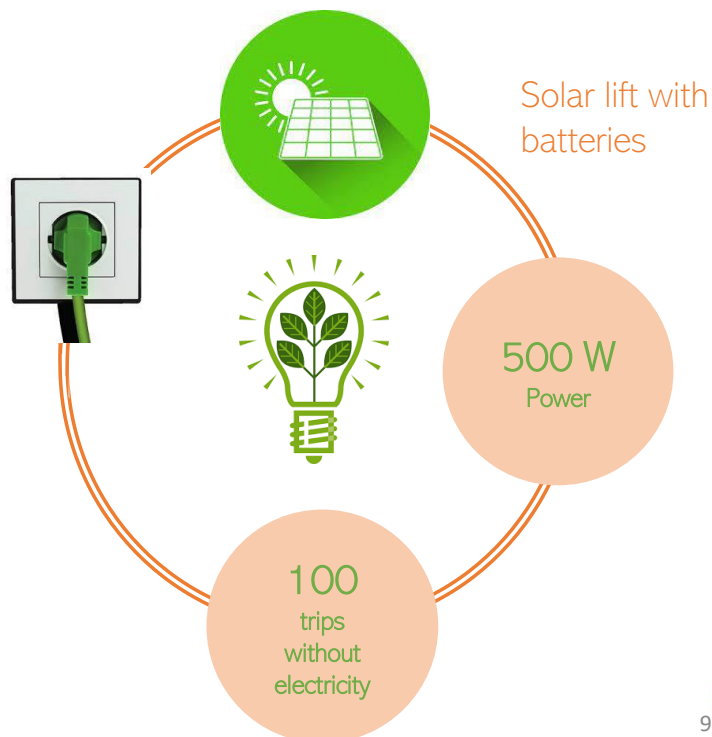
3 Phase	800Kg		1000Kg		1275Kg
Voltage	380III	230III	380III	230III	380III
P (Kw)	5,5/9		7,1/11,3		11/18
In (A)	12/19	18/28	15/22	22/33	25/39
V (m/s)	1/1,6		1/1,6		1/1,6

Single Phase	320 Kg	480Kg	630Kg
Voltage	230II		
P motor (Kw)	1,4	2,1	2,9
P absorbed (Kw)	2,8	4,2	3,8
In motor (A)	7,5	8,7	10,2
In absorbed (A)	13,5	15,7	18,4
V (m/s)	0,6		

Energy efficiency

Optional: System P2S Epic Power

- Single phase 220II
- Load <630Kg
- Power 500w
- 100 trips without electricity
- Energy recovery system
- Solar panel connection
- Energy reduction up to 70%



Cabines and finishes

- Cabines brochure **FELESA SMART** Series
- 8 finishes range



CITY



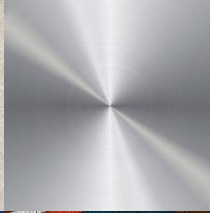
NATURE



TEXTURE



METAL



CRYSTAL



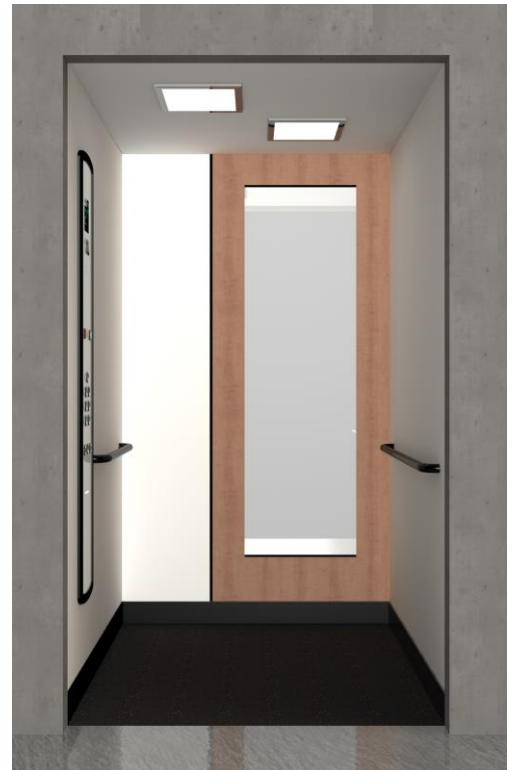
ETNIA

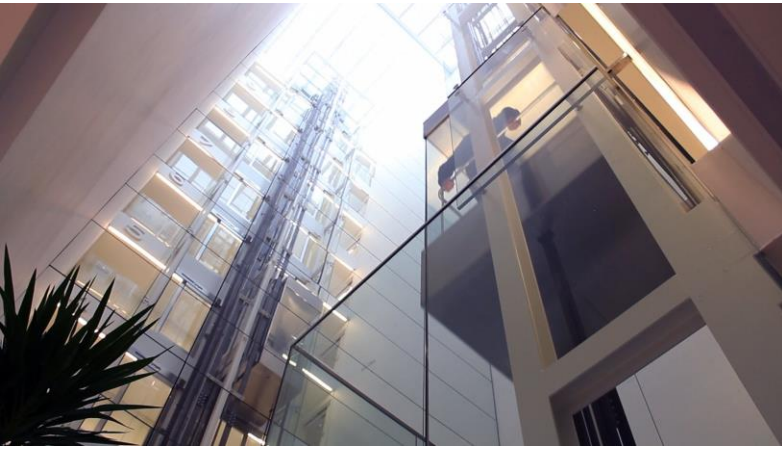


STONE



TEXTURE





FELES 



Moving forward & Moving on



www.felesa.com