

Moving forward & Moving on



New Buildings
Residential and commercial
Design
Modernity



GRLp

GRLp

- Applications
- Advantages
- Normative
- Application range
- Standard configurations
- Special configurations
- Power and consumptions
- Energy efficiency
- Cabines and finishes
- Gallery

Design + Modernity



Our range of elevators for the residential sector is integrated into the dynamics of life and needs of current buildings, both in efficiency and sustainability as well as in aesthetics and cabine dimensions. With silent and safe movement, functionality is assured.





Applications

- New buildings
- Residential
- Commercial
- Offices
- Hospital use

Advantages

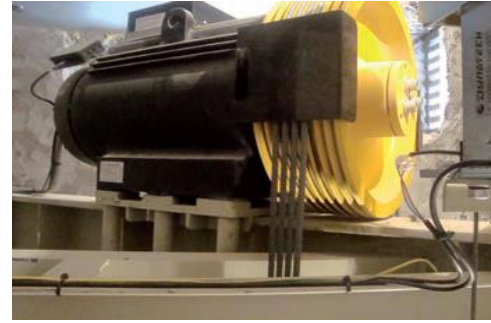
- Flexibility
- Confort
- Fiability
- Modernity
- Simple, double entrances
- 3-Phase / Single phase

Standards

- 2014/33/UE
- EN81-20
- EN81-70
- EN81-71
- EN81-72

Application range

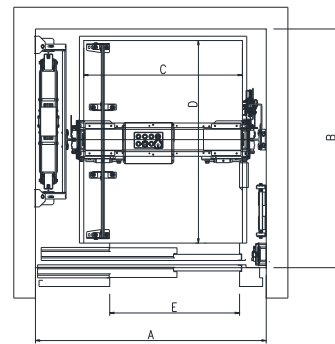
Load (Kg)	miniGRLp: 320/375/480/525/630	
Load (Kg)	GRL2p: 800/1000	GRL4p: 1250/1600/1800/2000/2500
Speed(m/s)	0,6 / 1/ 1,6	
Machine room	With motor room/ Machine room less	
Entrances	0° / 180°	
Travel Max (m)	50	
Suspension	2:1	
Voltage (V)	230II / 230III / 400III	
Car frame	Standard	
Pit(mm)	1100-1350mm (see variants table)	Low pit: 500mm EN81-21
Headroom(mm)	3400-3850mm (see variants table)	
Panoramics	SI	



Standard Configurations

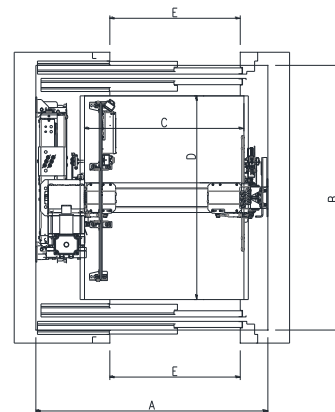
➤ Single entry

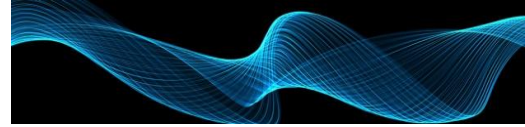
Load	Shaft	Cabine	Clear Op	Speed	HR	Pit	Handrail
Kg	AxB mm	CxD mm	E mm	m/s	mm	mm	mm
320	1350x1300	850x1000	700	1/1,6	3400	1350	700
480	1500x1600	1000x1300	800	1/1,6	3400	1100	700
630	1600x1700	1100x1400	900	1/1,6	3400	1100	700
800	1700x1900	1100x1600	900	1/1,6	3450	1100	700
1000	1700x2400	1100x2100	900	1/1,6	3500	1200	700
1250	2250x2400	1300x2100	1000	1/1,6	3850	1250	1100
1600	2350x2650	1400x2350	1100	1/1,6	3850	1300	1100
2000	2450x2900	1500x2600	1200	1/1,6	3850	1300	1100
2500	2750x3000	1800x2700	1300	1/1,6	3850	1400	1100



➤ Double entry 180°

Load	Shaft	Cabine	Clear Op	Speed	HR	Pit	Handrail
Kg	AxB mm	CxD mm	E mm	m/s	mm	mm	mm
320	1350x1600	850x1000	700	1/1,6	3400	1350	700
480	1500x1800	1000x1300	800	1/1,6	3400	1100	700
630	1600x1900	1100x1400	900	1/1,6	3400	1100	700
800	1700x2100	1100x1600	900	1/1,6	3450	1100	700
1000	1700x2600	1100x2100	900	1/1,6	3500	1200	700
1250	2250x2500	1300x2100	1000	1/1,6	3850	1250	1100
1600	2350x2750	1400x2350	1100	1/1,6	3850	1300	1100
2000	2450x3000	1500x2600	1200	1/1,6	3850	1300	1100
2500	2750x3100	1800x2700	1300	1/1,6	3850	1400	1100





Noise Map



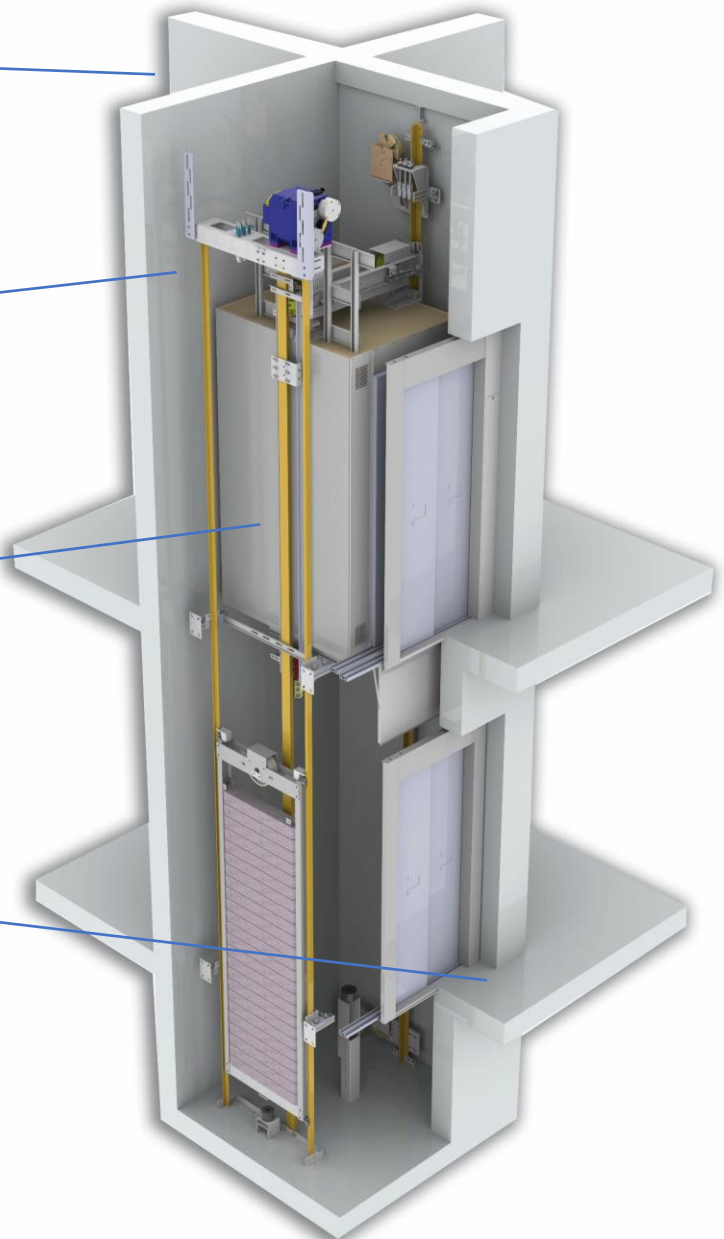
Comfort, safety, efficiency and sustainability are the starting point for the conception and design of all FELESA vertical transport products and solutions

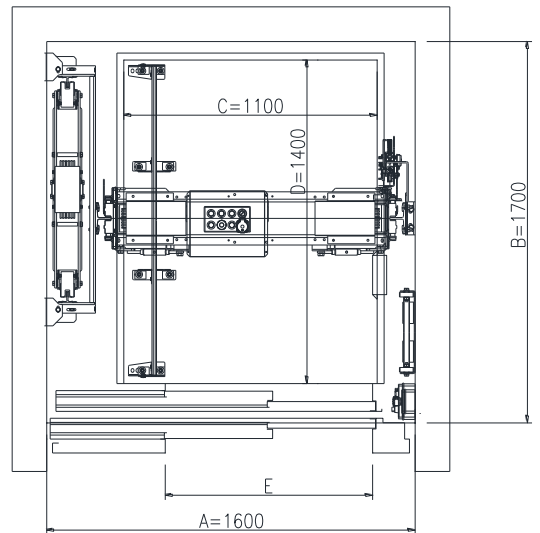
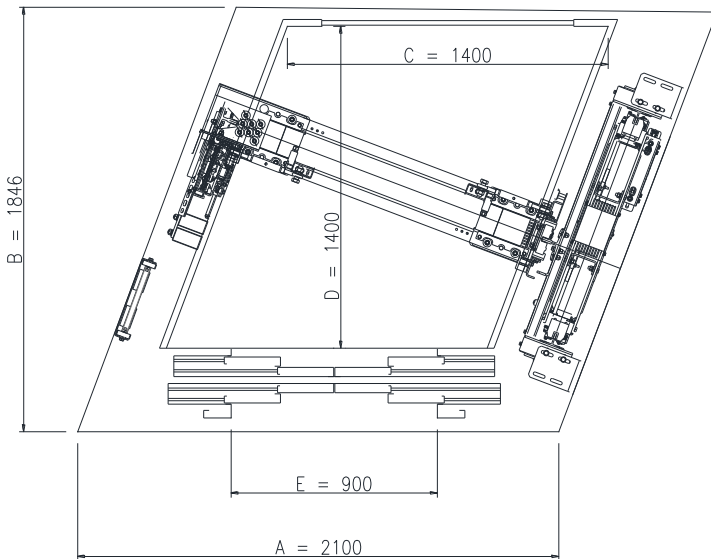
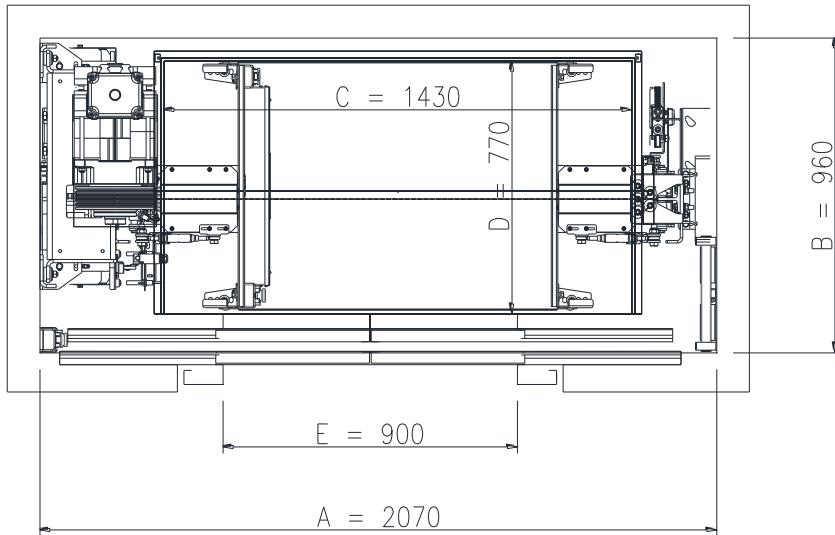
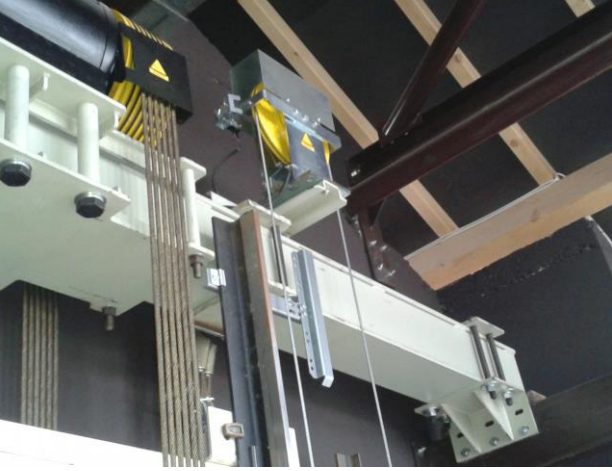
Adjacent Rooms
LpA max = 30 dB(A) (maximum)

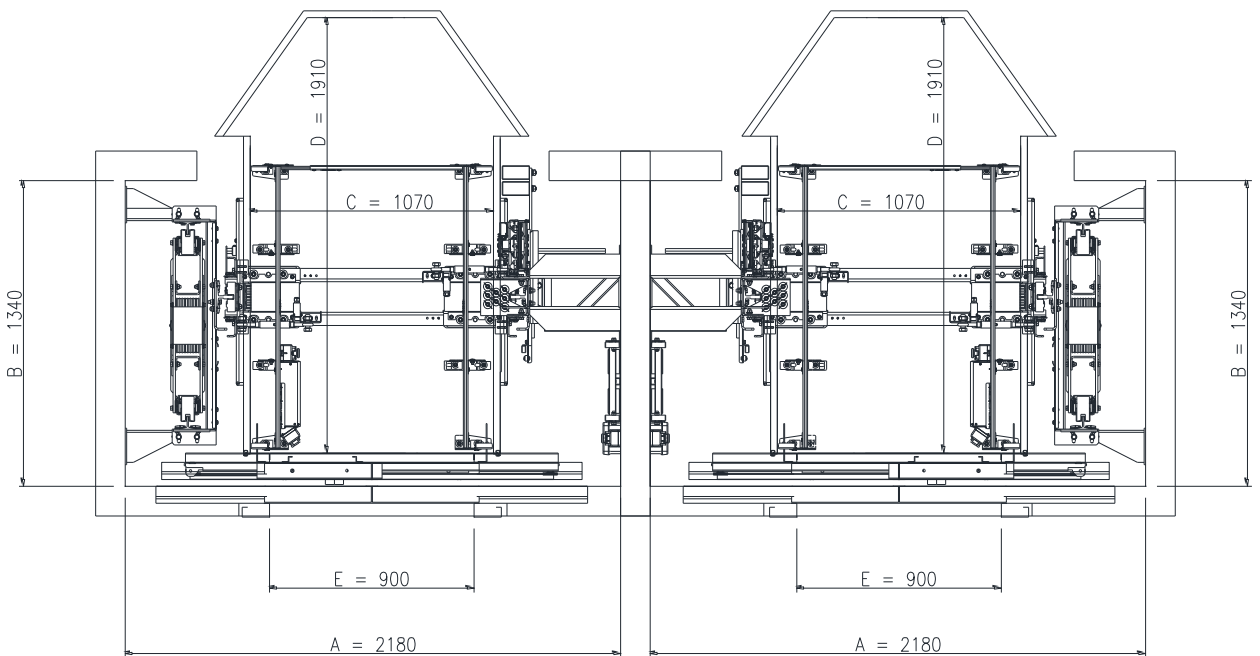
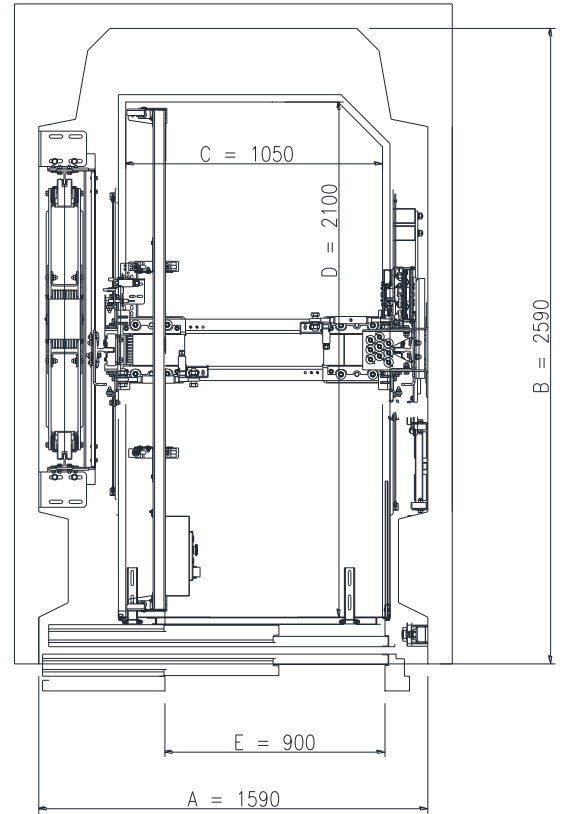
Shaft
- Average value
LpA EQ = 58 dB(A)
- Impulsive noise
LpA max = 64 dB(A)
Closing/opening time contactors < 0,25ms

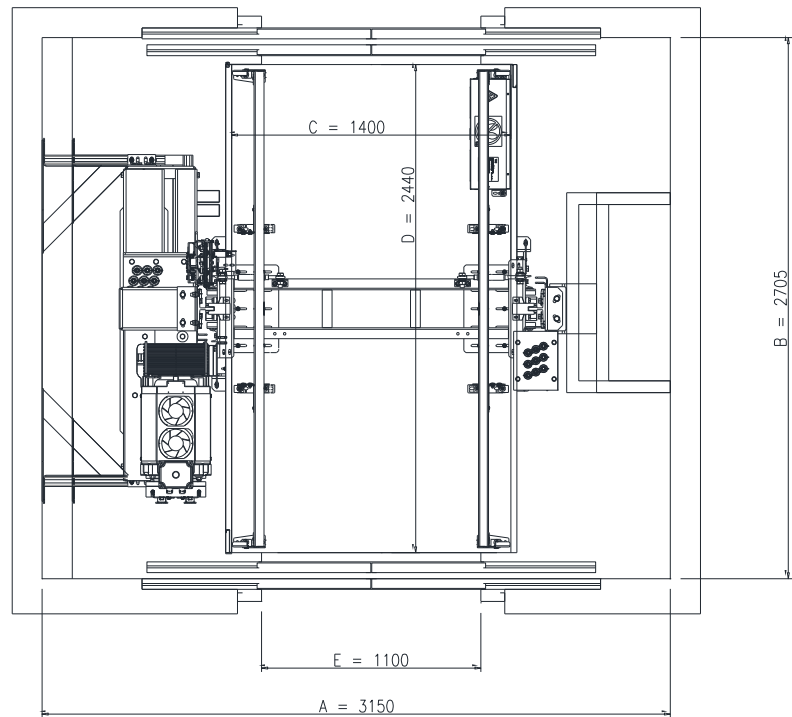
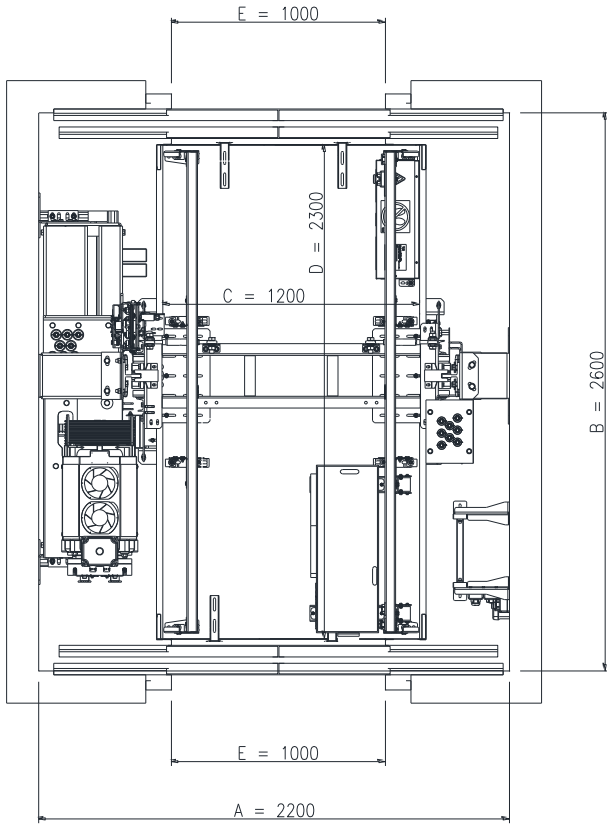
Cabine interior
- Average value
LpA EQ = 53 dB(A)
- Maximum value
LpA max = 57dB(A)

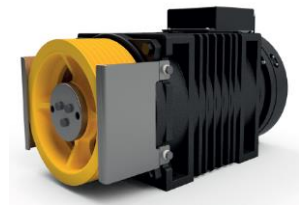
Landings
- Doors opening/closing noise
LpA max = 57dB(A)
- Cabine moving noise.
LpA max = 49dB(A)
- Top floor impulsive noise
LpA max= 55dB(A)
Closing/opening time contactors < 0,25ms











Power and Consumptions

3 Phase	320 Kg		480Kg		630Kg		800Kg		1000Kg	
Tensión	380III	230III	380III	230III	380III	230III	380III	230III	380III	230III
P (Kw)	3,3/4		3,3/5,3		4,4/7		5,5/9		7,1/11,3	
In (A)	8/13	12/19	8/14	12/21	10/16	15/24	12/19	18/28	15/22	22/33
V (m/s)	1/1,6		1/1,6		1/1,6		1/1,6		1/1,6	

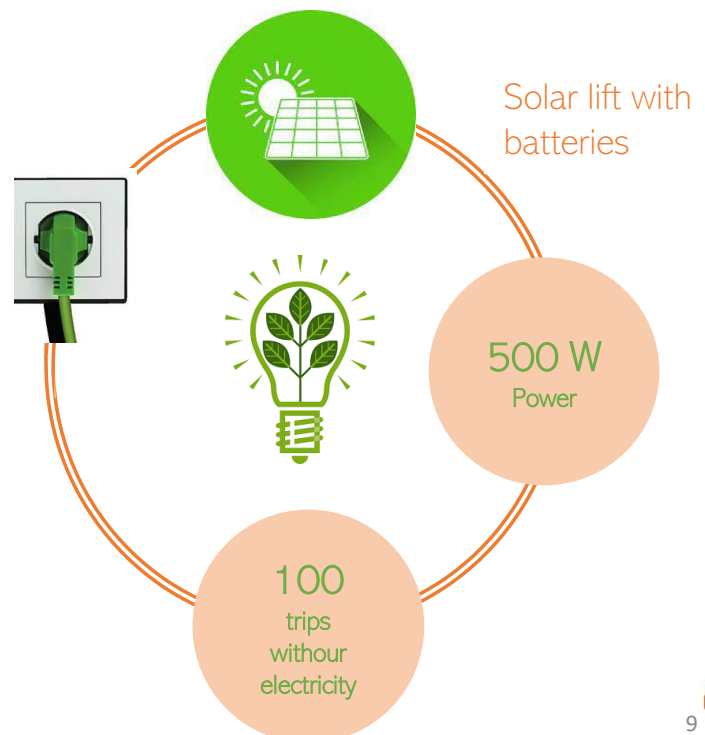
3 Phase	1250 Kg	1600Kg	2000Kg	2500Kg
Tensión	380III	380III	380III	380III
P (Kw)	11/18	16/26	20/32	26/36
In (A)	25/39	28/44	28/44	68/83
V (m/s)	1/1,6	1/1,6	1/1,6	1/1,6

Single Phase	320 Kg	480Kg	630Kg
Voltage	230II		
P motor (Kw)	1,4	2,1	2,9
P absorbed (Kw)	2,8	4,2	3,8
In motor (A)	7,5	8,7	10,2
In absorbed (A)	13,5	15,7	18,4
V (m/s)	0,6		

Energy efficiency

Optional: System P2S Epic Power

- Single phase 220II
- Load <630Kg
- Power 500w
- 100 trips without electricity
- Energy recovery system
- Solar panel connection
- Energy reduction up to 70%



Cabines and finishes

- Cabines brochure **FELESA SMART** Series
- 8 finishes ranges



CITY



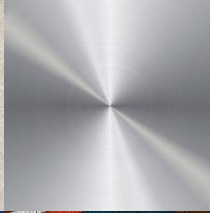
NATURE



TEXTURE



METAL



CRYSTAL



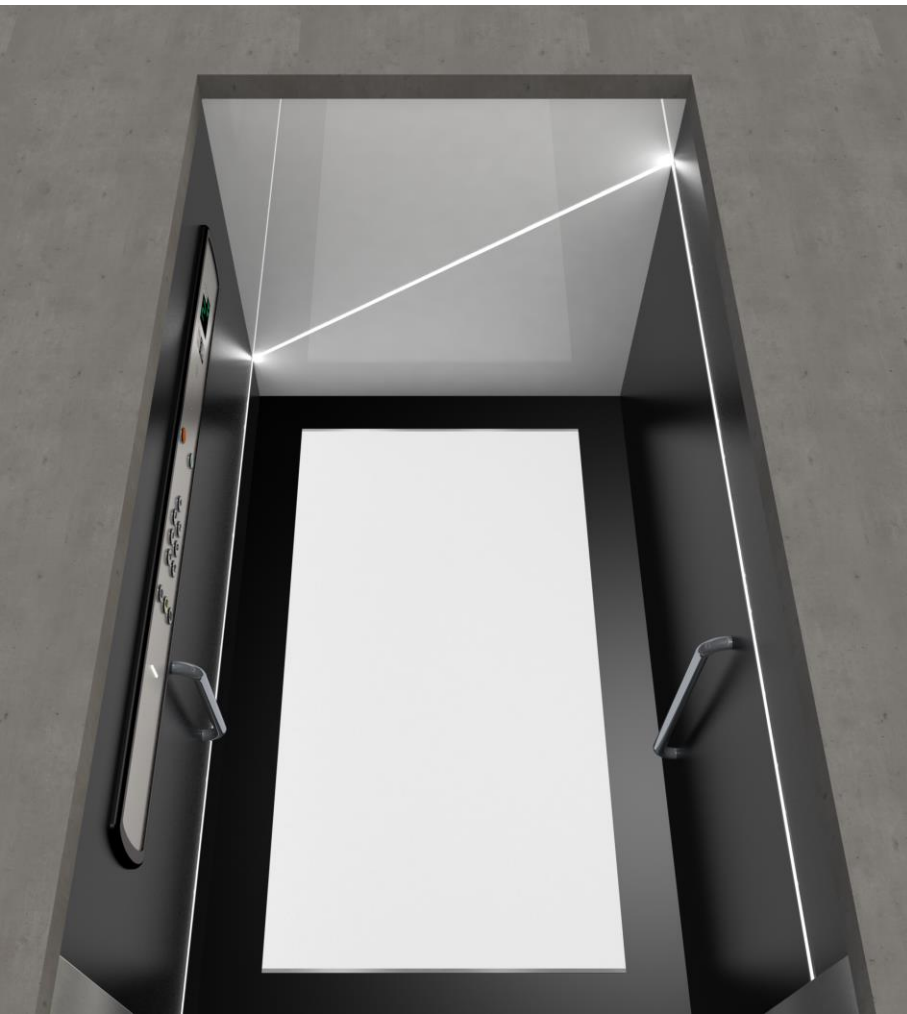
ETNIA

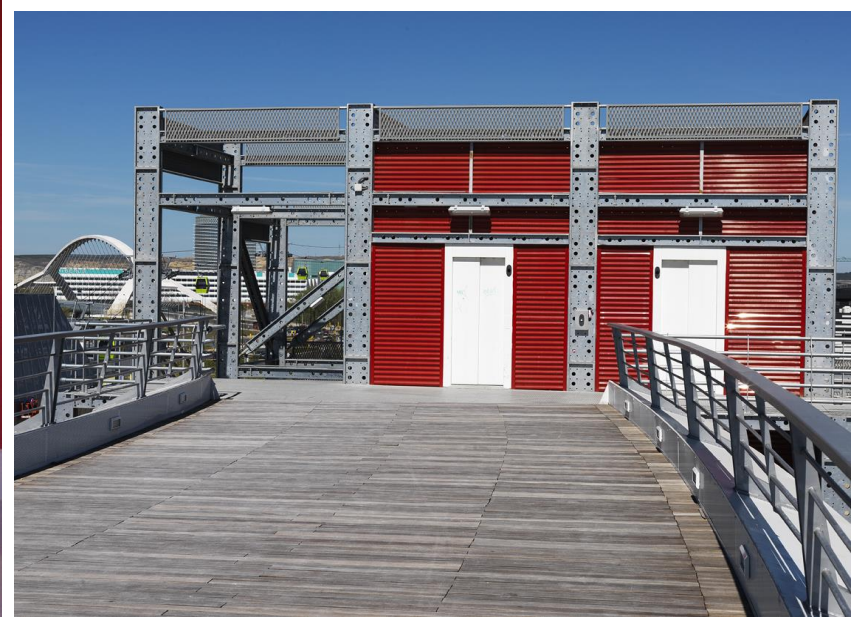


STONE



TEXTURE





FELES 



www.felesa.com

Moving forward & Moving on